



TROPICAL DEPRESSION HARVEY BRIEFING

4:15 PM CDT
Wednesday, August 23, 2017

Prepared by:
John Metz



What's Changed

Tropical Depression Harvey



Corpus Christi
WEATHER FORECAST OFFICE

- Only minor changes...
- System has been nearly stationary most of the day.
- Still Tropical Depression with 35 mph winds.
- Track was adjusted slightly to the left. But don't focus on this exact track.
- Rainfall amounts will be adjusted upward slightly to 10 to 15 inches with isolated amounts of 20 inches+ along the mid Texas Coast.

Situation Overview



Corpus Christi
WEATHER FORECAST OFFICE

Tropical Depression Harvey

- No changes to Watches.
- Hurricane Watch remains in effect from Baffin Bay to San Luis Pass
- Storm Surge Watch remains in effect from Baffin Bay to High Island.
- Tropical Storm Force Winds and surge impacts expected to begin Friday afternoon with landfall possible along mid Coast Friday Night or Saturday.
- Hurricane Warnings could be issued overnight or tomorrow (Thursday).

Situation Overview



Corpus Christi
WEATHER FORECAST OFFICE

Tropical Depression Harvey

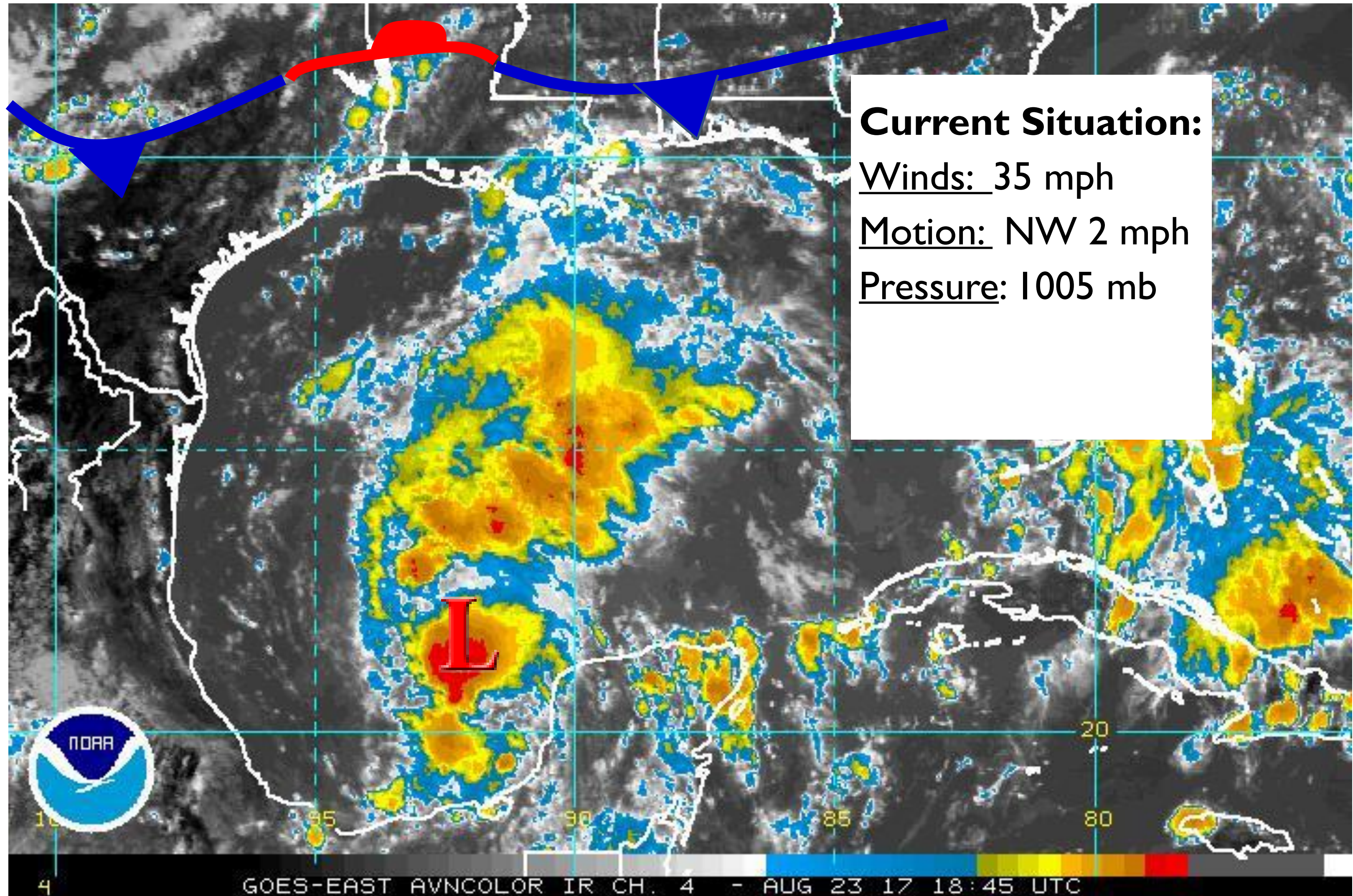
- Forecast is for Category I Hurricane at landfall. Reasonable worst case for planning purposes Cat 2.
- Peak Storm Surge Flooding 4-6 Feet above ground level along and right of center. Still very dependent on eventual track.
- Heavy rainfall/flooding will be primary concern as the system is expected to stall or meander across the area through weekend. Rainfall totals of 10-15 inches with isolated amounts of 20 inches or more possible.

Current Satellite View



Corpus Christi
WEATHER FORECAST OFFICE

Tropical Depression Harvey



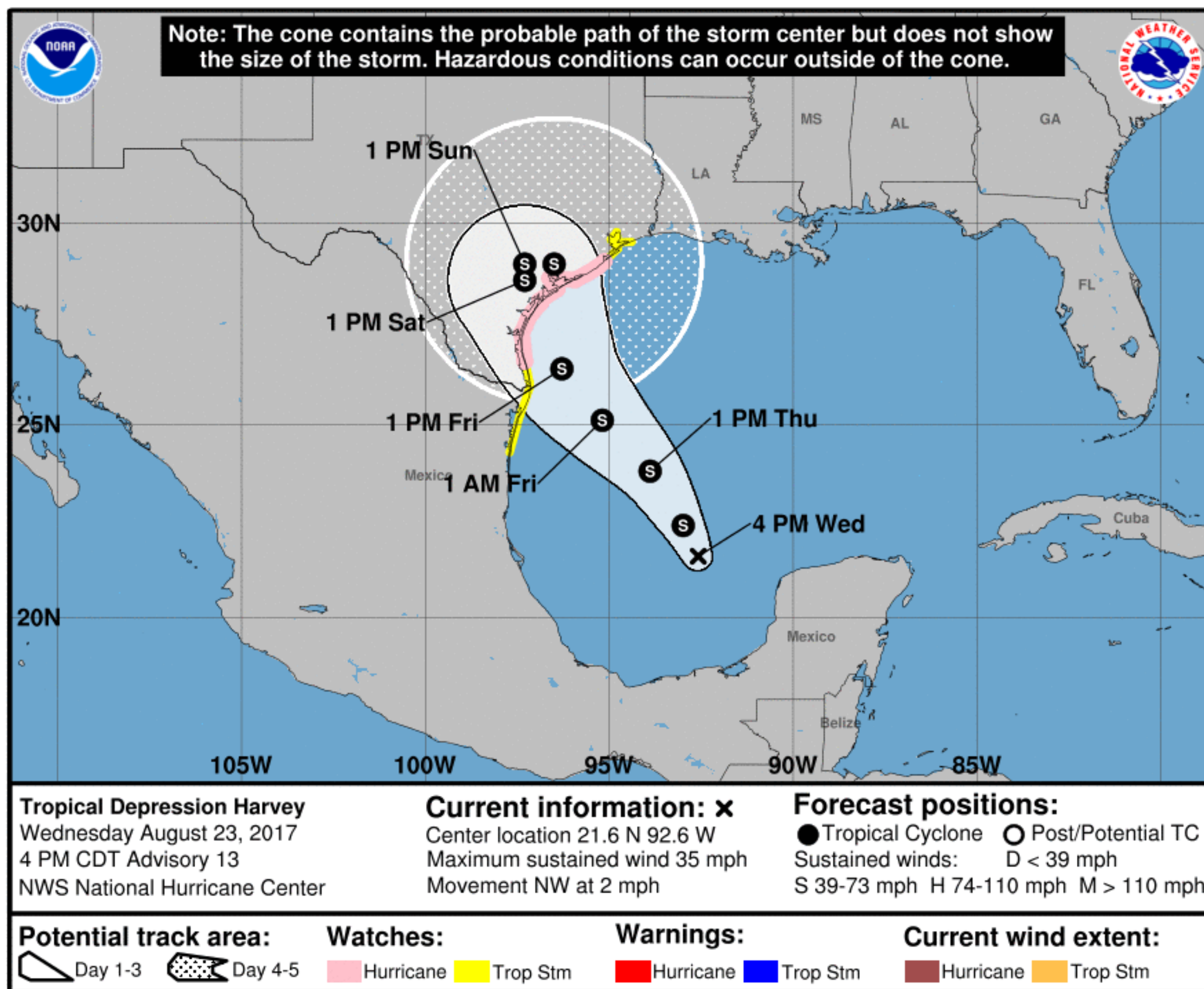
GOES-EAST AVNCOLOR IR CH. 4 - AUG 23 17 18:45 UTC

Situation Overview



Corpus Christi
WEATHER FORECAST OFFICE

Tropical Depression Harvey



- T.D. Harvey has max sustained winds 35 mph.
- Do not focus on exact forecast track. Plan for potential for Hurricane force winds in Hurricane Warning Area.
- Wind impacts, Storm Surge and Flooding rains can occur outside of cone area.

NOTE: Do not focus on the exact track. Impacts can occur well outside the area enclosed by the cone.

Earliest Time of Arrival

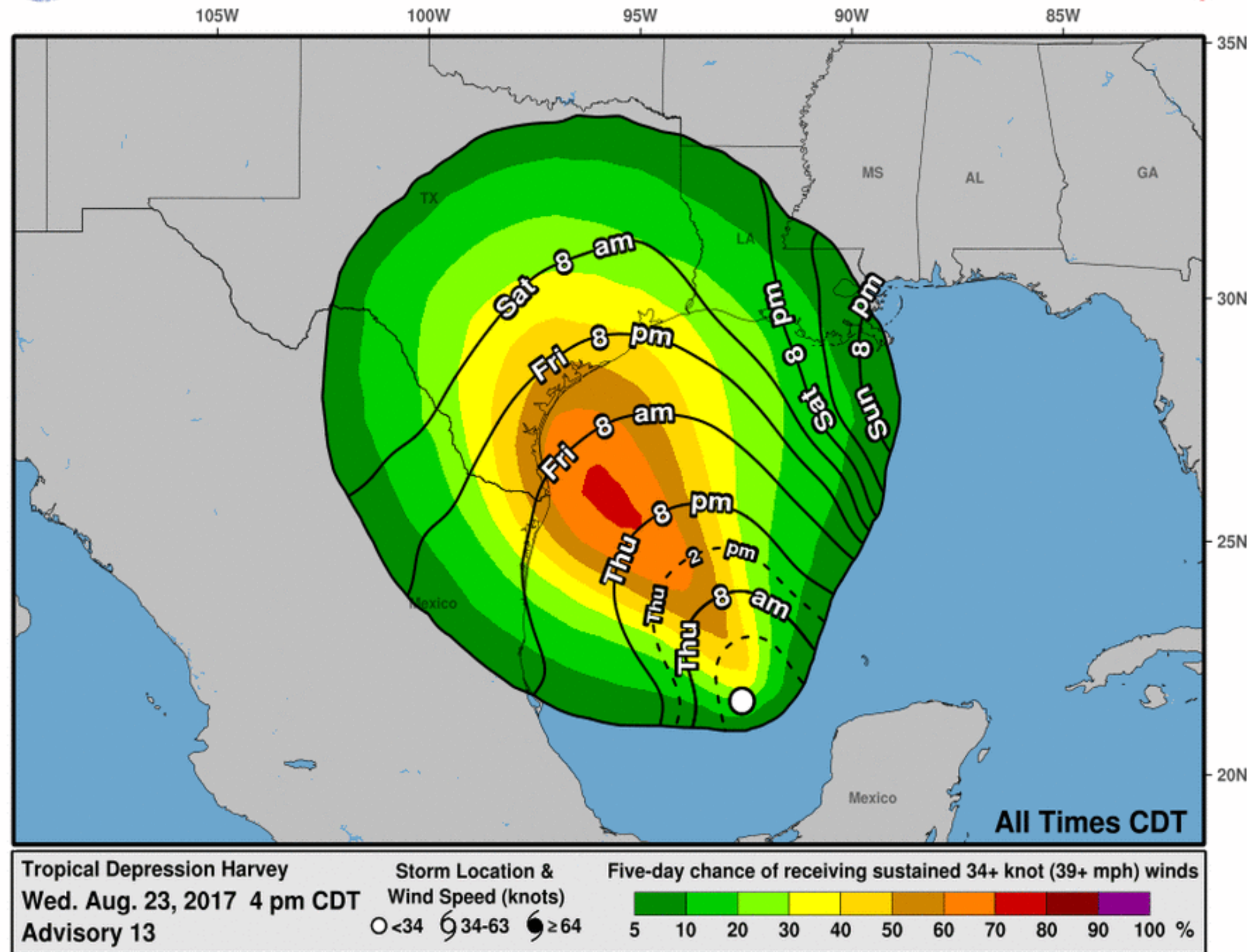


Corpus Christi
WEATHER FORECAST OFFICE

Tropical Depression Harvey



Most Likely Arrival Time of Tropical-Storm-Force Winds



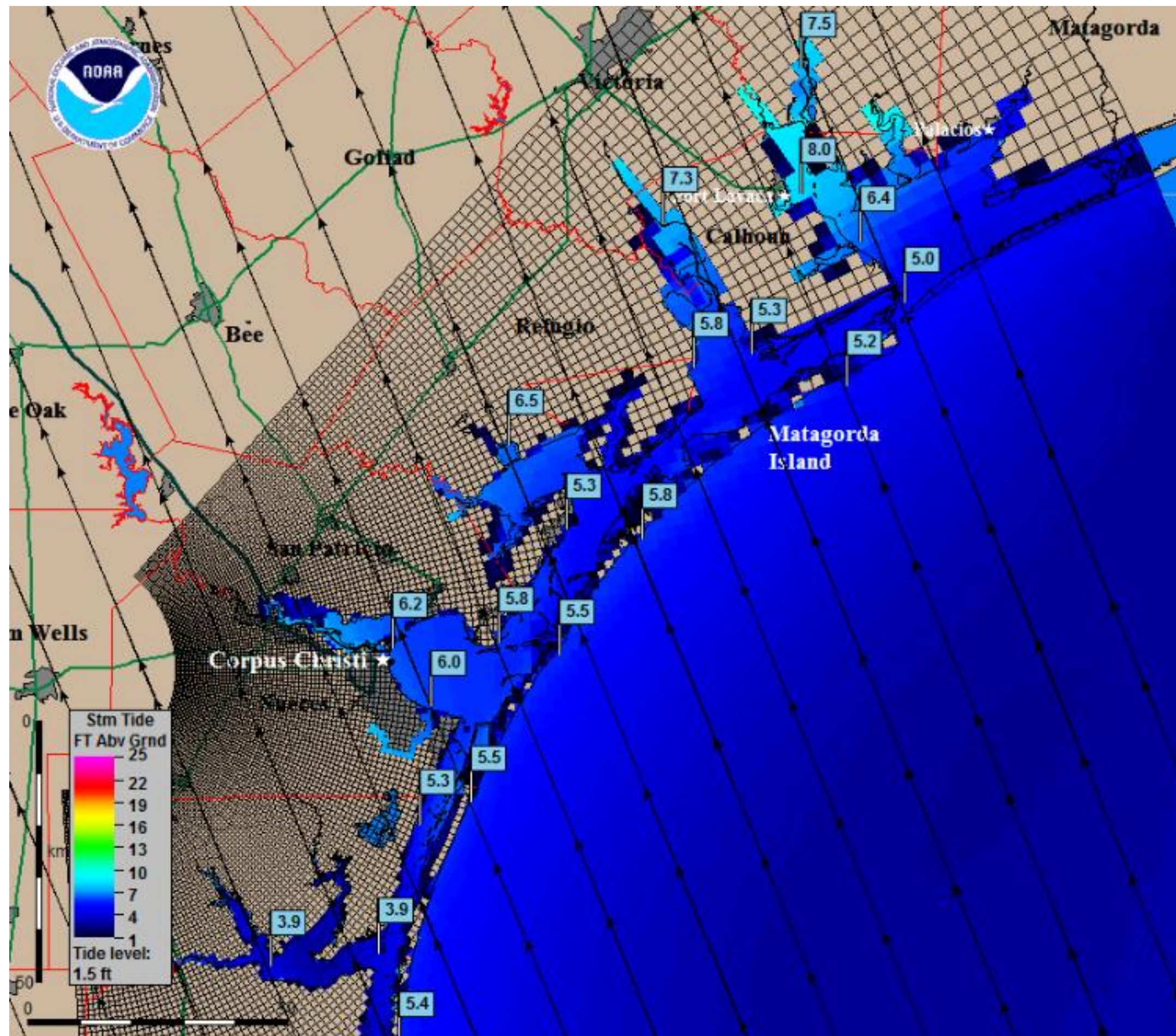
- The most likely time of arrival of Tropical Storm Force Winds for the Mid Texas Coast is now Friday Afternoon.
- However, the earliest reasonable time this area could see Tropical Storm Force Winds will be late Thursday Night.

Potential Storm Surge



Corpus Christi
WEATHER FORECAST OFFICE

Tropical Depression Harvey



Areas of greatest risk:

- Plan for peak storm surge flooding of 4 to 6 feet above ground level along and to the right of where the center crosses the coast.

Timing

- Storm surge inundation could begin as early as Friday Morning.

SLOSH MEOW for a 2 moving NNW at 5 mph at high tide - AGL

Potential Storm Surge



Corpus Christi
WEATHER FORECAST OFFICE

Tropical Depression Harvey

- **Key locations that could flood with 4-6 foot storm surge:**
 - Low spots along Park Road 22 and Highway 361 on Mustang Island.
 - Low spots on Highway 181 between North Beach and Portland including portions of North Beach.
 - Corpus Christi T-Heads
 - Waterfront property along: Indianola, Port O'Connor, Fulton and Rockport.

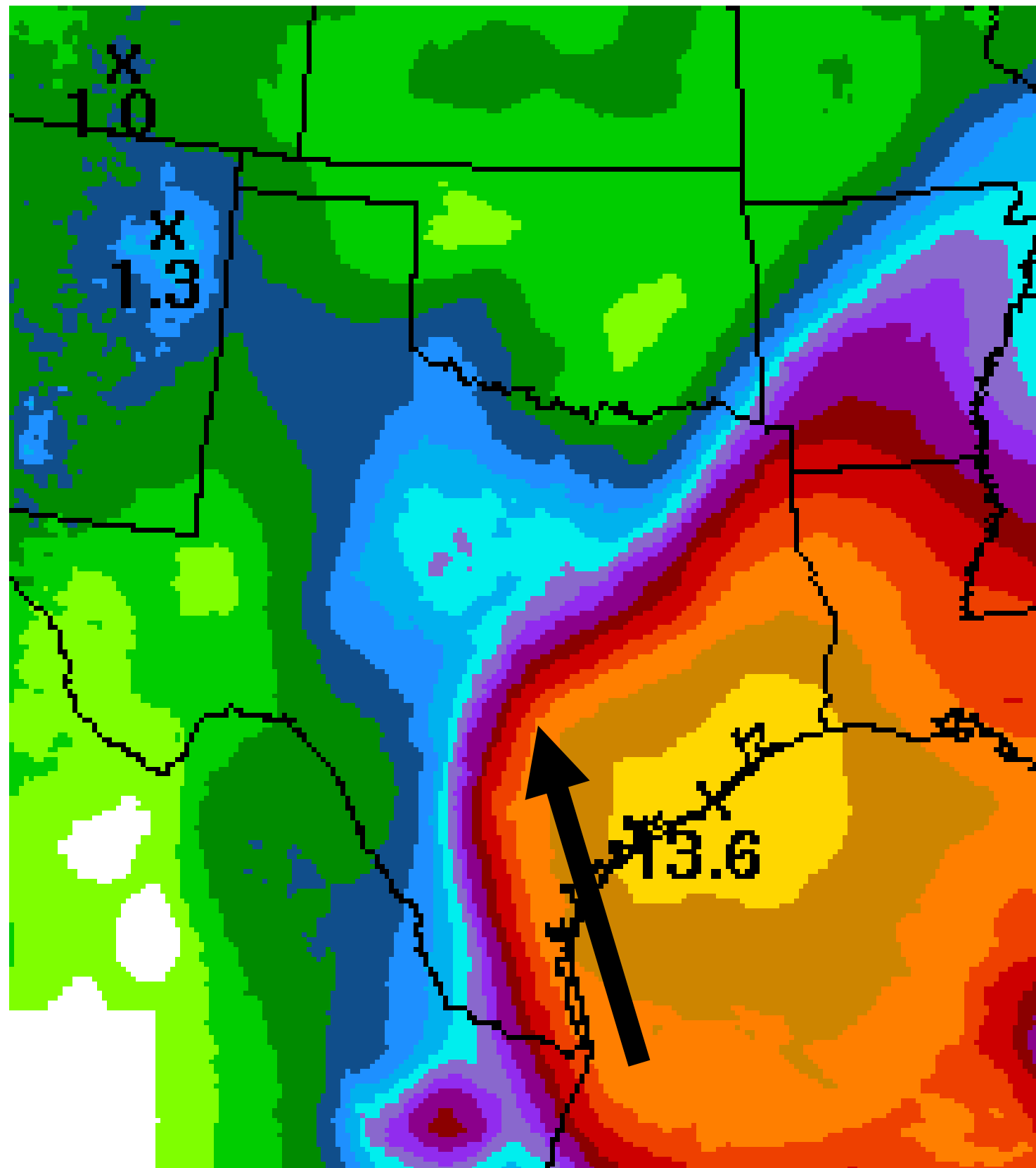
Expected Storm Total Rainfall



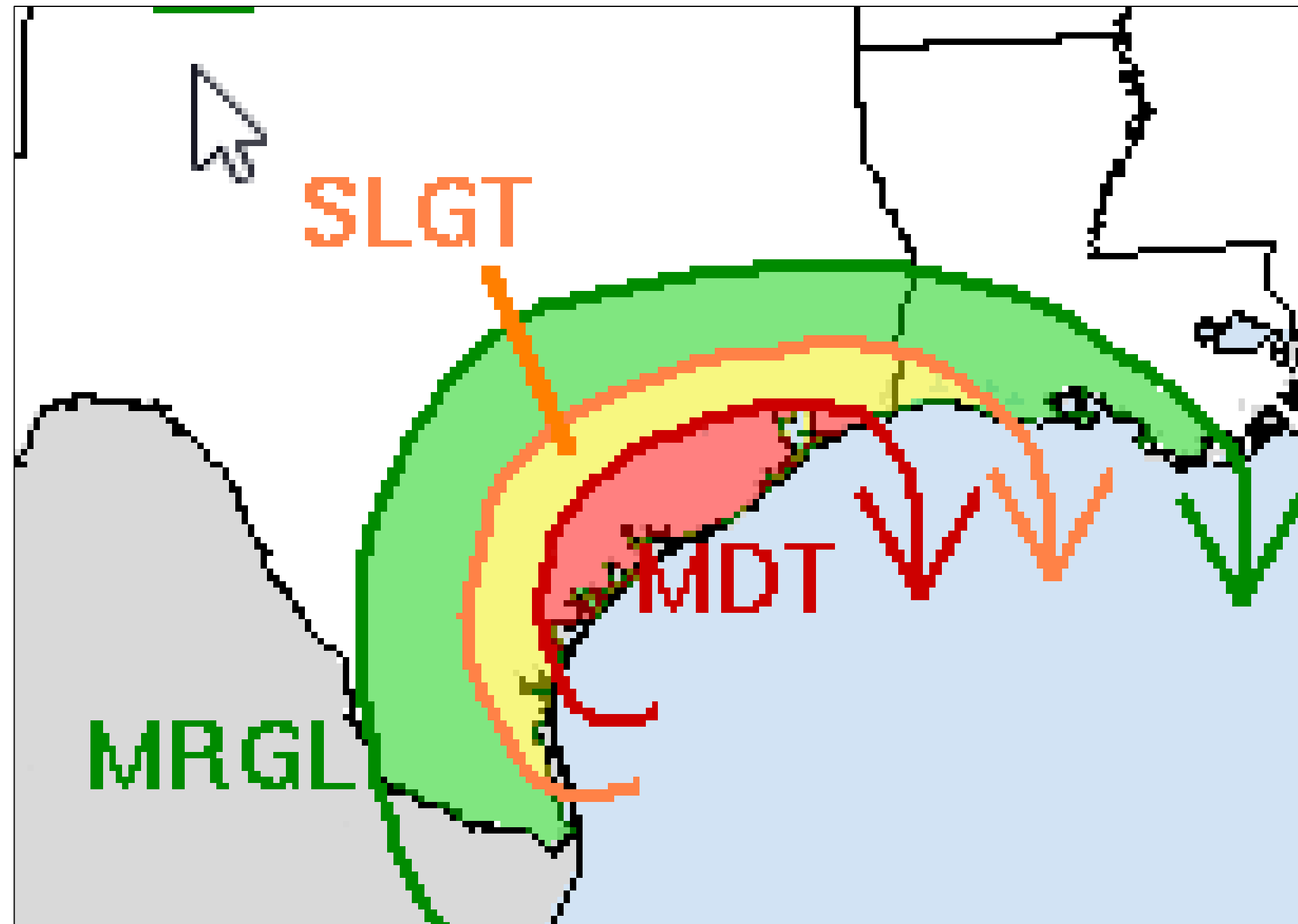
Corpus Christi
WEATHER FORECAST OFFICE

Tropical Depression Harvey

Storm total rainfall



Excessive Rainfall Outlook



Storm Total Rainfall amounts of 10-15" isolated amounts of 20" or more possible including Corpus Christi and Victoria Crossroads, Friday through Weekend

Summary



Corpus Christi

WEATHER FORECAST OFFICE

Tropical Depression Harvey

- Tropical Storm Force Winds and surge impacts expected to begin Friday afternoon with landfall possible along mid Coast Friday Night or Saturday.
- Forecast is for Category 1 Hurricane at landfall. Reasonable worst case for planning purposes Cat 2.
- Peak Storm Surge Flooding 4-6 Feet above ground level along and right of center. Uncertainty on exactly where this will occur.
- Heavy rainfall/flooding will be primary concern as the system is expected to stall or meander across the area through weekend. Rainfall totals of 10-15" with isolated amounts of 20" or more possible.



TROPICAL DEPRESSION HARVEY BRIEFING

*The Next Briefing Will Be:
Wednesday at 10:15 PM CDT*

You can get the latest graphics and information on this storm at www.hurricanes.gov



NWSCorpus

www.weather.gov/CorpusChristi